

Name: AP

Program: Choose to look at books | free time Criteria: see STO

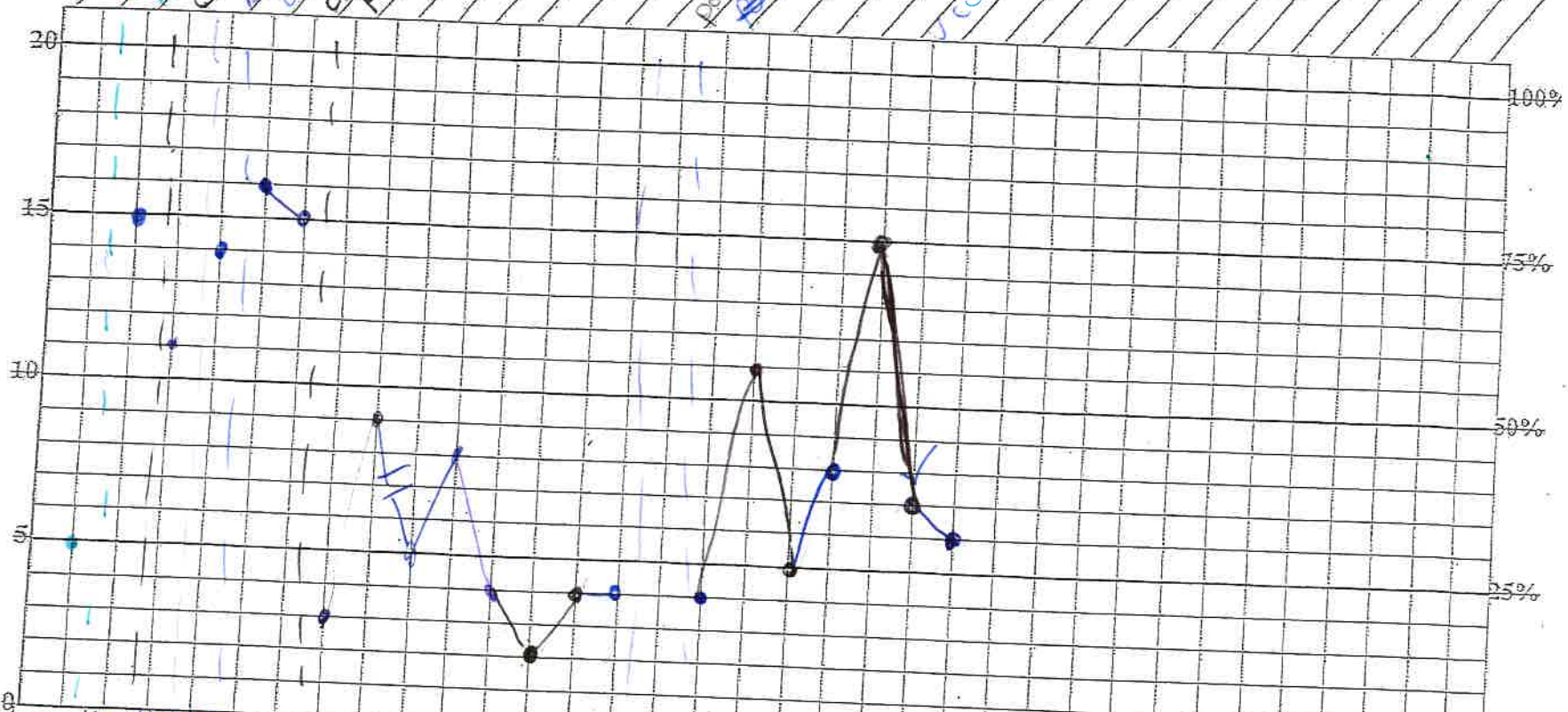
- _____
- _____
- △ _____

A = 20% x 1
 B = 20% x 1
 C = 40% x 1
 D = 50% x 1
 E = 60% x 2 or 100% x 1

Criterion F

Post Probe
 B + Probe G

Continue



Correct	5	15	11	14	10	15	3	9	5	8	4	2	4	4	0	4	11	5	8	15	7	16
Incorrect	15	5	9	6	4	5	7	11	15	12	10	18	10	16	5	10	9	15	8	15	17	16
Date	1/18	2/8	2/11	2/18	2/20	3/1	3/22	4/3	4/23	4/30	5/10	6/1	6/17	5/6	7/10	7/15	7/21	7/28	8/12	8/15	8/17	8/16
Initials	ML	SM	SM	SM	SM	SM	SM	SM	SM	SM	SM	SM	SM	SM	SM	SM	SM	SM	SM	SM	SM	SM

100% Correct